



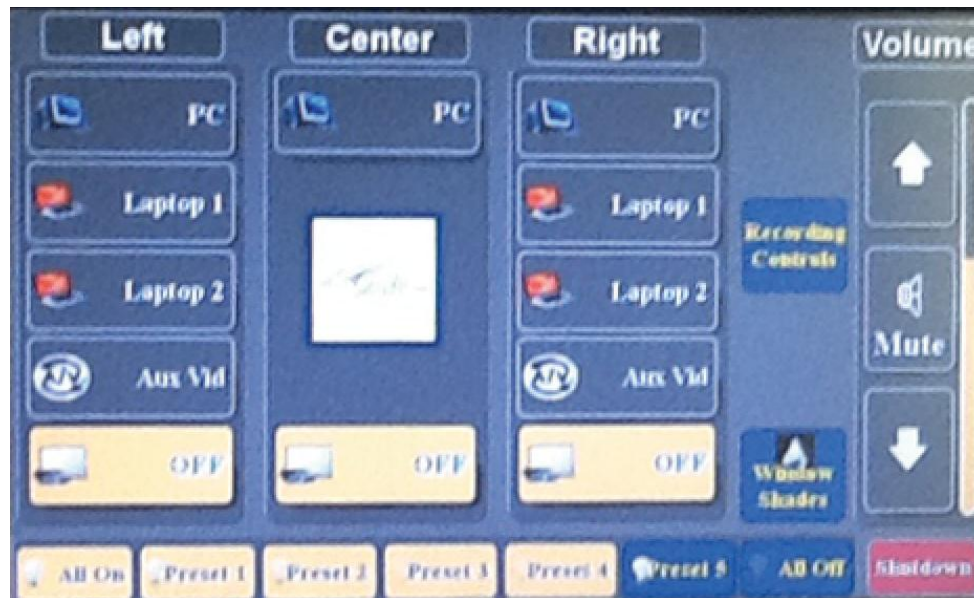
Audio Visual controls for Large Format Classrooms

The audio visual control panel for all large classrooms can be found on the podium.
On the default page, the AMX touchpad has three different controls:



Projector Control

Please note that all controls are set to *Presenter* orientation (i.e. Presenter's right, Presenter's left, etc.) To turn on the projector, simply select the appropriate input on the screen. For example, selecting PC will automatically output the classroom's computer to the selected projector.



Lighting Control

Lighting controls are based on the particular zones of the classroom. For convenience, to turn off all lights in the room, simply click on the **All On** button. To turn off all lights in the room click on the **All Off** button.



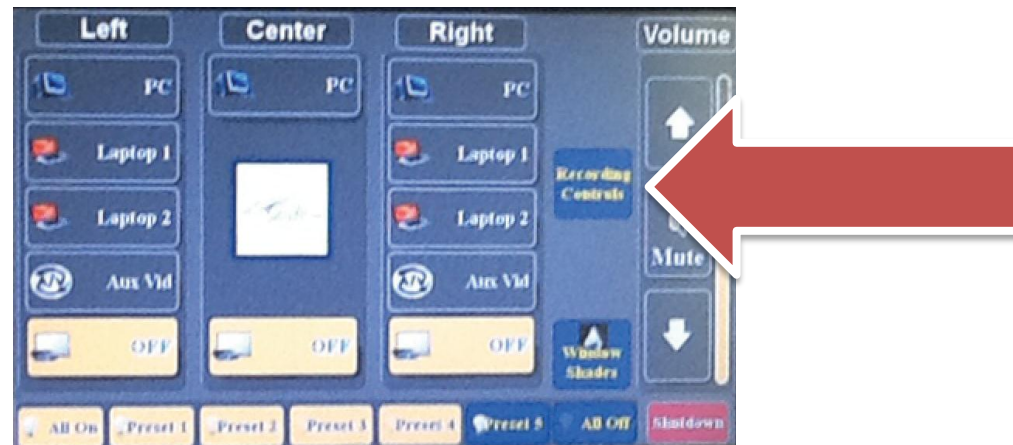
Volume Control

Volume control will control the level of audio in the room via the speakers. Use the up and down arrows for adjusting the audio in the classroom. For changing the microphone levels, click on the up and down arrows and the **Mics** volume control will appear. Use the up and down arrows under the **Mics** heading to adjust the microphone levels. To mute, simply click on the **Mute** button between the up and down arrows.



Recording Controls

All of the large classrooms are equipped with video recording capabilities that captures the speaker as well as any PowerPoint presentations from the dedicated computer. To record the class simply click on the **Recording Controls** button found on the default control page.

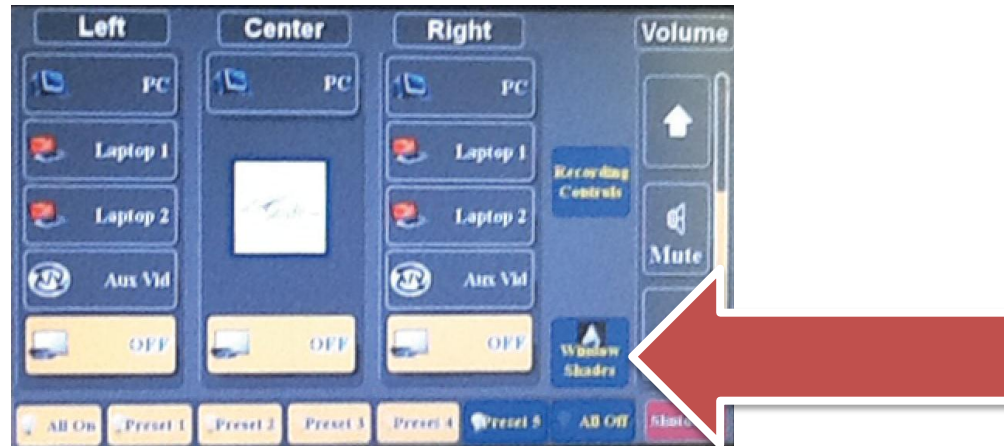


The touch screen will change to the following window. Simply click on the **Record** button to record the event. To stop the recording, click on the **Stop** button to stop the recording. Once completed, please contact the Information Technology Services department (help@law.uci.edu) to publish the recording.



Windows Shade Controls

Some rooms that have windows also contain window shade controls which also can be controlled from the Audio Video touchpanel. To control the window shades in the classroom, click on the **Window Shade** button on the default control page.



Each shade has two different types of window shades. **Blackout** will blackout all external light from the windows, while **Sheer** will allow some light from the windows. To adjust the blinds, simply click on the up and down arrows under each respective window shade.

